



CANADIAN HADASSAH-WIZO

2022

IMPACT

REPORT



PROJECT UPDATES



HADASSAH HOSPITAL, EIN KEREM	4
CHW HADASSIM CHILDREN AND YOUTH VILLAGE	6
CHW NAHALAL YOUTH VILLAGE	8
HADASSAH ACADEMIC COLLEGE (HAC)	10
SHAMIR MEDICAL CENTER (ASSAF HAROFEH)	12
CHW NERI BLOOMFIELD ACADEMY OF DESIGN	24
CHW NETANYA TECHNOLOGICAL HIGH SCHOOL	26
WIZO SERVICES FOR VICTIMS OF DOMESTIC VIOLENCE	28
NEW PARTNERSHIPS IN 2022	30
CHW IN CANADA	31
WHAT ELSE IS NEW AT CHW	31

WHAT'S NEW AT CHW



To our valued donors, volunteers, and supporters,

We are so excited to showcase our Annual Impact Report, which highlights the value that CHW has provided over the past twelve months to change lives, provide hope, and build futures for at-risk women, children, and families both in Israel and here in Canada.

The **BREATHE LIFE GIVE LOVE** annual campaign supported two new healthcare projects as part of our \$3.2 M campaign to modernize the Institute of Pulmonary Functions and Diseases at Shamir Medical Center and provide lifesaving equipment, including four isolation bays, for the Pediatric Cardiac Critical Care Unit (PCCCU) at Hadassah Hospital. CHW believes that excellence in healthcare should be accessible to all women, children, and their families. Read more on pages 4 and 14 about how our campaign and the \$600,000 in funds CHW raised helped to save lives.

Empowering domestic violence survivors is a top priority for CHW and was the funding focus for the **S.O.S – Starting Over Safely** summer campaign. This year, we added two new CHW partners, Franny's Fund in Canada, and Michal Sela Forum in Israel. We also continued our support of WIZO programs, Safety Net and Essentials Kits, as well as the new respite summer camp program for at-risk youth. S.O.S raised over \$450,000 to help provide

economic independence and empower women and children to break the cycle of violence. To learn more about the impact that CHW has made on the lives of women and children through our social service programs and projects, visit pages 6, 8, and 28.

Advancement of education for youth in Israel leads to better outcomes and brighter futures, both for the students and the country. By supporting CHW, together we build futures for the next generation. Through funds donated to our educational institutions, we provided professional training, innovative teaching methods, and practical tools needed for success in a wide variety of fields. We invite you to read about the impact we made on the lives of students both here and abroad on pages 10, 24, and 26.

Thanking you for your philanthropy today and always.

Warm regards,

Lynn Gillman
National President

Lisa Colt-Kotler
Chief Executive Officer



OUR IMPACT IS YOUR IMPACT

EDUCATION HEALTHCARE SOCIAL SERVICES



**RANKED TOP OF NEWSWEEK MAGAZINE'S LIST OF
'WORLD'S BEST HOSPITALS IN THE FIELD OF CARDIOLOGY'**

HADASSAH HOSPITAL, EIN KEREM

Pediatric Cardiac Critical Care Unit (PCCCU)

The new, state-of-the-art PCCCU is the only one of its kind in Jerusalem. For these infants, precise diagnoses and immediate, advanced treatments are critical. Congenital heart defects comprise the most common type of birth defect. Currently, the global incidence of congenital heart disease at birth has been estimated at eight to 12 cases per 1,000 live births. This is significant because Jerusalem has the highest birth rate of all cities in the western world. This means the number of babies born in Israel with heart defects is overwhelming, so having a world-renowned PCCCU is critical to save lives.

WHAT MAKES THE NEW PCCCU SO UNIQUE?

The PCCCU, located adjacent to Hadassah's internationally renowned Heart Institute, positions it within one of the most advanced surgical towers in the world.

There are four fully equipped patient rooms (and four more scheduled to open in early 2023) with state-of-the-art cardiac

equipment not available in the regular PICU. The expanded size and upgrades to these facilities and medical equipment have been game changers, giving staff the much-needed space and conditions to offer optimal medical care.

The new department also offers individualized, culturally sensitive care, treating each child with a developed cultural understanding of each family's unique needs and practices.

What really makes the unit so successful is the dedicated pediatric cardiac specialists, who are always available to handle emergencies, offer comprehensive medical care and monitor patients.

"Hadassah has earned its name in Israel and around the world as a leading centre of excellence, where first-class experts in the fields of medicine and science work, providing professional and humane medical care, leading in research and smart technological developments, and training the next generation of physicians in Israel." - Prof. Yoram Weiss, Director General of HMO



HADASSAH'S EMERGENCY RELIEF MISSION TO ASSIST UKRAINIAN REFUGEES

Hadassah medical experts provided emergency medical relief to Ukrainian refugees fleeing war. Based at the Presmysl Humanitarian Aid Center on the border of Poland-Ukraine, a rotation of Hadassah staff and volunteers was one of the first medical teams on the ground, where they set up to treat the thousands of refugees who were seeking safety.

Efforts focused on stabilizing patients with urgent health problems that included: cancer and heart disease; treating refugees for gastrointestinal issues resulting from poor nutrition during the journey from Ukraine; and providing urgently needed medications, which were left behind when evacuating.

During the dark weeks of the war at the time of writing, Hadassah treated over 35,000 refugees and forged connections with leading Polish hospitals and medical personnel who continue to operate on the ground.



VISIT WITH CANADIAN AMBASSADOR LISA STADELBAUER

CHW hosted Canadian Ambassador Lisa Stadelbauer at Hadassah Hospital, Ein Kerem. The Ambassador enjoyed a warm welcome and an in-depth overview of CHW's longstanding partnership with Hadassah and the impact the world-renowned institution has had in Israel and around the world.

The Ambassador heard from top medical professionals about gender bias in medical research and the healthcare system and the role more women are playing in changing the status quo as they take on senior management and director positions.

While touring the Pediatric Cardiac Critical Care Unit, the Ambassador met with several families and heard from some of the diverse staff who are the driving force of the hospital.



1,000+
admissions each year,
making it one of the
busiest and best
intensive care units in
Israel

250+
open heart surgeries
conducted each year

200+
catheterization
procedures performed
annually

50+
admissions for severe
cardiac infections

24/7
care available by
pediatric cardiac
specialists who handle
all emergencies and
monitor patients

10+
languages are available
for services and
treatments, including
Hebrew, Arabic, Russian,
Amharic, English, and
French



CHW HADASSIM CHILDREN AND YOUTH VILLAGE

CHW Hadassim Children and Youth Village has a balanced approach to education in an inclusive and nurturing environment. The Ministry of Education has taken note of many successes and awarded several prestigious prizes to the school. The growth of the flagship Na'aleh program is due to increasing global issues, including the increase in anti-Semitism, and safety concerns amongst international Jewry. The village has been able to expand its capacity to accommodate youth thanks to the CHW renovations and upgrades of The Claudia Goldman Dormitory and The Marilyn Libin and Family Dormitory.

SAFE HAVEN FOR CHILDREN AND YOUTH

CHW Hadassim continues to be a haven for vulnerable children and youth, both from Israel and from Diaspora communities. It provides shelter for dozens of girls from high-risk backgrounds who receive specialized treatment to help them with their rehabilitation and traumatic past. In addition, two Family Units offer children ages six and up a safe and nurturing home environment after experiencing major neglect or abuse at home.

CHW Hadassim took part in an emergency campaign to shelter war-affected Ukrainian and Russian youth. The professional teams on site provide crucial support networks and counselling services in addition to essential items such as clothing and hygiene products.

EUNICE MOUCKLEY THERAPEUTIC CENTRE

Now in its fifth year of operations, The Eunice Mouckley Therapeutic Center treats children and families with severe challenges and dysfunction. The families are referred to the centre once all other community-based programs have been exhausted and children are at great risk and distress. The centre's professional staff provides comprehensive and intensive family interventions that rebuild family connections. The Center can accommodate up to 40 families, providing around 120 hours of treatment per month. The treatment at the center includes parental coaching, and individual and family group treatments.

THE LEA ZEV SHILMAN & JOSEPH ZUNIA SHILMAN THERAPEUTIC PROGRAMS

While youth have gradually returned to their 'normal' routines, the long-term effects of the pandemic on youth mental health are felt daily. Much like the wider community, the therapeutic team at CHW Hadassim has reported a 25% spike in rates of anxiety, depression, violence, substance abuse, and eating disorders, particularly among girls. Over the past year, CHW continued to step up support for more programs and targeted services that address youth mental health, especially among at-risk and vulnerable youth ages 12-15.

Thanks to the generous support from the JACLYN FISHER FOUNDATION, CHW can provide more tools, resources and training to support youth mental health. This transformational gift ensures that 100% of the youth living in the village can receive ongoing counselling, and emotional, or therapeutic support tailored to their specific needs and supports a host of specialized therapeutic programs, specifically designed for high-risk youth, together with their family.

The unique therapeutic programs aim to strengthen communication and relationships between parents and children and continue to expand. More interactive activities took place since the pandemic, encouraging parents to take an active role in their children's lives, whether the children live at home or on campus.

Increased emphasis is being placed on reducing the stigma around mental health and shining a light on how it affects the entire family. The program operated in both hybrid format and in-person sessions, so parents could easily join a virtual support group or come together for special workshops and occasions.



100% OF STUDENTS RECEIVE ONGOING GUIDANCE AND EMOTIONAL SUPPORT FROM PROFESSIONAL COUNSELLORS AND THERAPISTS

350 CHILDREN AND YOUTH CALL CHW HADASSIM HOME

200 FROM THE NA'ALEH PROGRAM MOVED TO ISRAEL SEEKING A BETTER LIFE

60+ UKRAINIAN AND RUSSIAN YOUTH AFFECTED BY WAR HAVE FOUND A HAVEN AT CHW HADASSIM

100 YOUTH FOUND A POSITIVE OUTLET FOR SELF-EXPRESSION THROUGH THERAPEUTIC MUSIC PROGRAMS. THERE HAS BEEN A 25% INCREASE FROM LAST YEAR!

30 HIGH-RISK FAMILIES SIGNIFICANTLY IMPROVED PARENT-CHILD RELATIONSHIPS THROUGH THE LEA ZEV SHILMAN & JOSEPH ZUNIA SHILMAN THERAPEUTIC PROGRAMS

1,500 HOURS OF SPECIALIZED CARE WERE PROVIDED TO LOCAL HIGH-RISK FAMILIES THROUGH THE EUNICE MOUCKLEY THERAPEUTIC CENTRE

24/7 EMERGENCY CARE AND SUPPORT ARE PROVIDED THROUGH THE AMY AND PAUL BLAVIN FAMILY CHILDREN'S CENTER FOR HIGH-RISK CHILDREN WHO NEED TO BE REMOVED FROM THE HOME DUE TO NEGLECT AND ABUSE



THERAPEUTIC MUSIC PROGRAM

The Therapeutic Music Program grew by over 25 percent, directly benefiting over 100 youth. The program is tailored to each participant's special needs, skills, and aspirations.

Students learn both music theory and choose a focus from a wide range of instruments, including guitar, piano, drums, and vocals. Emphasis is also placed on exposing students to diverse musical genres, while also encouraging them to explore and develop music from their home countries.

Music arranged and performed by students has played a stronger role in the village since the pandemic and is now incorporated into every activity and special event. This past year new programs were initiated including a poetry and song writing course which helps students with their writing skills and gives them tools for self-reflection and self-expression.



CHW NAHALAL YOUTH VILLAGE

CHW Nahalal maintained high standards as a top-performing school in the region. The school's outstanding performance in several key areas, including significantly decreased student dropout rates, maintaining a high percentage of graduates who continue onto meaningful army and/or national service, integration of special education students, and a high rate of student eligibility for matriculation exams.

While 98% of all graduates continue onto national volunteer programs and/or meaningful army service, the number of female students who continue to become officers is twice the national average in Israel.

While CHW Nahalal is well known for its prizes in biotech and STEM programs, students from the Film and Communications Department won first place in DocAviv - the only film festival focused on documentaries in Israel. The fourteen-minute winning student film 'No Masks' followed five teenagers from CHW Nahalal during the pandemic.

What unites the students from different backgrounds are the 'metaphorical' masks they each hide behind. The documentary offers a glimpse of modern Israeli youth culture and the unique mix of youth who come together at CHW Nahalal.

320 YOUTH RESIDE AT CHW NAHALAL YOUTH VILLAGE

140 YOUTH ARE PART OF THE NA'ALEH PROGRAM
ARRIVING FROM OVER 15 COUNTRIES

26 REFUGEES FROM WAR-TORN UKRAINE FOUND SAFETY
AT CHW NAHALAL

20 WAR-AFFECTED YOUTH ARRIVED FROM RUSSIA IN
HOPES OF A BETTER FUTURE

180 NATIVE ISRAELI YOUTH MOVED TO THE VILLAGE
SEEKING GREATER EDUCATIONAL OPPORTUNITIES

1,700 STUDENTS ATTENDED JUNIOR HIGH AND HIGH
SCHOOL BASED AT THE VILLAGE

50,000 HOURS OF COMMUNITY VOLUNTEER
SERVICE ARE COMPLETED BY STUDENTS



Click the icon to watch the Hebrew-language documentary.



EXPANDING PSYCHOSOCIAL PROGRAMS FOLLOWING THE PANDEMIC

Since the pandemic, CHW Nahalal has remained a haven for hundreds of Na'aleh students, many of whom were unable to return to their families abroad due to extended travel restrictions. Some are Israeli youth from disadvantaged backgrounds or broken homes who remained on-site to continue their individualized learning and therapeutic programs. Students assisted in maintaining the fields, bees, cows and horses. The experienced staff, including a therapeutic team, helped to ensure that students continued to feel safe and healthy, both physically and mentally. To reduce stress and anxiety, additional hours of therapeutic programs were available to all students, including therapeutic riding at the horse stables and music sessions at the newly upgraded Music and Arts Centre.

THERAPEUTIC HORSE RIDING

The upgraded CHW Horse Stable has become a second home for many students. These renovations provide a more conducive and comfortable therapeutic and educational environment for many students. Nahalal students can enjoy the warm, nurturing environment and support from professional trainers. The therapeutic riding and the daily horse care routine help to reinforce self-confidence and self-esteem for students struggling to reduce stress and anxiety.

GRADUATE HOUSING UNIT

The graduate housing unit provides a home base for graduates of CHW Nahalal who lack supportive family networks and housing in Israel. The project is near completion and expected to open its doors in early 2023. The new unit can accommodate up to 12 graduates at a time and offers a comfortable space where graduates can return to on weekends and holidays as they complete their military and national service and look for employment or post-graduate study.

CHW VENTURE PHILANTHROPY: THE EXPANSION AND MODERNIZATION OF THE DAIRY FARM

The Dairy Farm continues to grow and expand as a key educational and therapeutic facility at CHW Nahalal. The facilities and academic program developed over the past few years has led to an increase in students specializing in the Agricultural Track. There are over 300 children from CHW Nahalal and hundreds more from nearby communities benefiting from the Dairy Farm.

The Dairy has gained a reputation for being a centre for innovation in Israel. It also serves as both a therapeutic and educational facility for dozens of at-risk children, including students with learning and behavior challenges. It offers a new environment for building life-skills and teaching values. Students gain a stronger work ethic and learn to be a dependable part of a team.

SUPPORTING YOUTH ESCAPING CONFLICTS AND WAR

CHW partners immediately stepped up and responded to the crisis in Ukraine, both internationally and in Israel. WIZO worked closely with the Ministry of Education and the Jewish Agency to offer immediate assistance and a haven for Ukrainian refugees at WIZO youth villages. CHW Nahalal Youth Village has become a haven for youth displaced due to the war. CHW is proud to support therapeutic programs and assistance to youth as they rebuild their lives in Israel.

ENGAGING CANADIAN YOUTH AT CHW NAHALAL

CHW was thrilled to host over 125 Canadian Young Judea Biluim Israel participants at CHW Nahalal! The Canadian teens got their hands dirty and helped at one of the four interactive stations on the farm. They had the chance to milk cows, paint farm equipment, plant herbs and even prune the vines that are used for Nahalal's homemade chardonnay wine. The students also brought piles of school supplies, which they generously donated to assist new Ukrainian students.





HADASSAH ACADEMIC COLLEGE (HAC)

The DAN Department of Creative Human Design

The DAN Department of Creative Human Design provides a nurturing, hybrid learning environment where innovative ideas have a chance to develop to their full potential. The DAN Department continues to facilitate the development of tools, instruments, and products designed to be used by all people, with a focus on populations with special needs.

Students gain a wealth of knowledge and will leave with an advanced technical tool kit for the future, based on computer programming knowledge taught in studio and workshop settings, and an understanding of the design process through research, development, and structural elements.

Programs offered at the DAN Department consciously cultivate a sense of curiosity, openness, aesthetics, and attention to detail with a focus on functionality, cultural awareness, and the aesthetic roles of design.

These practical skills are combined with exposure to the history and anthropology of design, and its role in defining how people understand and interact with each other and their environment.

To stay relevant, the design world had to redefine itself within a drastically new reality, providing relevant solutions for a post-pandemic world. Unique to The DAN Department is a focus on social design and providing cutting-edge solutions to better humankind.

133

STUDENTS ARE ENROLLED
IN THE DAN DEPARTMENT

95%

OF ALL INSTRUCTION IS
FRONTAL LEARNING

A FIRST

PROF. DINA SHACHAR IS THE FIRST AND ONLY WOMAN IN ISRAEL
TO ACHIEVE A PROFESSOR TITLE IN INDUSTRIAL DESIGN

The Blender Center for Innovation and Entrepreneurship

HAC recently launched The Blender to provide students and graduates with a framework in which to develop ideas that could have practical future applications in business, and in other realms of society. The Blender was founded by Dr. Tali Hadasa-Blank, who is a senior lecturer in the Department of Management.

The Blender provides a jump start for HAC's students and graduates venturing into the world of innovation. The Blender serves to inspire, empower, teach, and guide the HAC community through the entrepreneurial process using a range of teaching models, including lectures, workshops, labs, and more.



HAC GENERAL STATISTICS

4,676

STUDENTS ARE CURRENTLY ENROLLED AT HADASSAH ACADEMIC COLLEGE IN JERUSALEM

74%

OF STUDENTS ARE WOMEN FROM DIVERSE BACKGROUNDS, INCLUDING CHRISTIAN, MUSLIM ARAB, JEWISH, AND HAREDI

80%

OF STUDENTS COME FROM FAMILIES IN WHICH THEY ARE THE FIRST GENERATION TO PURSUE HIGHER EDUCATION

DOUBLED

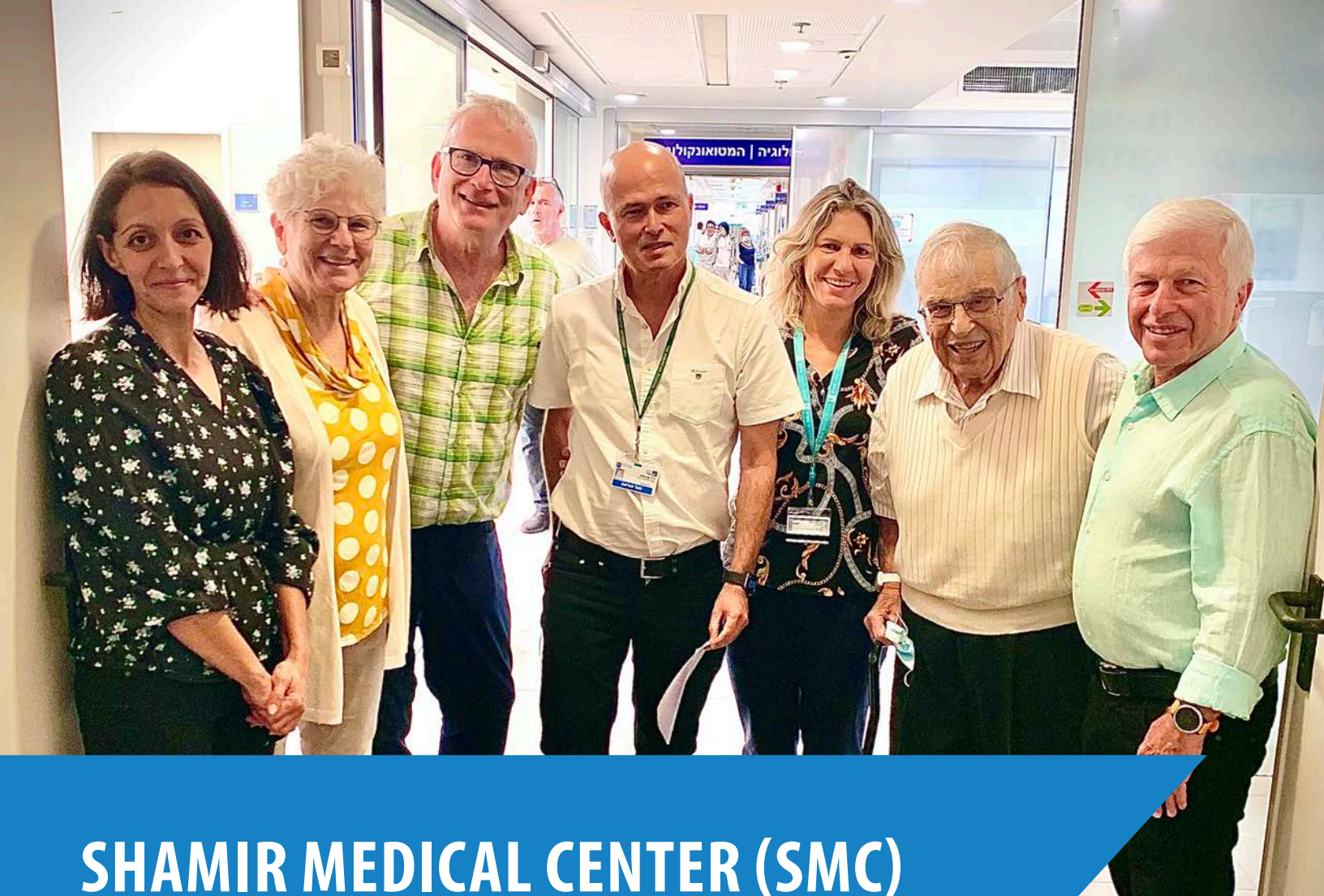
HADASSAH ACADEMIC COLLEGE HAS MORE THAN DOUBLED ITS STUDENT BODY POPULATION IN THE PAST DECADE

The CHW Centre for Clinical Training and Community Care

The CHW Centre for Clinical Training & Community Care continues to enhance the training of speech and language pathologists and audiologists, while improving the overall quality of medical care to Jerusalem's most at-risk children and adults.

In the last year, the centre staff and students provided over 2,133 treatments within the audiology clinic, including diagnostic testing and fitting of hearing aids and some 2,515 speech and language pathology treatments for young children.





SHAMIR MEDICAL CENTER (SMC)

The Esther Matlow^z Ophthalmology Department

The Esther Matlow^z Ophthalmology Department at Shamir Medical Centre (SMC) is a state-of-the-art eye care department providing clinical and surgical expertise in all related eye disorders and diseases.

The Department is ranked as one of the top ophthalmology departments in Israel thanks to a leading professional team, modern technological equipment, high availability of appointments, and premium lens implants for cataract surgery. Dr. Eran Pras heads the Department with a team of 30 physicians that work in three main areas: Inpatient and Surgical Departments; Outpatient Clinics, and Scientific Research.

INPATIENT AND SURGICAL DEPARTMENT

Over 2,500 patients were treated in the Inpatient and Surgical Department in the past year, which includes pre-operative preparation, surgery, post-surgery follow-up and urgent care.

IMPACT NUMBERS

2,500 SURGERIES PERFORMED

35,000 OUTPATIENT CLINIC PATIENTS

5,000 INTRAVITREAL INJECTIONS

OUTPATIENT CLINIC

Over the past year, 35,000 patients were handled in the Outpatient Clinic. The clinic provides a spectrum of ocular critical services; both ongoing care and urgent treatments. Among the most critical and effective treatments provided through the clinic are the Intravitreal Injections, which combat several retinal diseases and conditions, and without which, patients risk the loss of eyesight and blindness. Most of the people requiring this treatment are elderly patients who also suffer from diabetes and AMD. Postponing essential treatment risks deterioration of their vision and if left untreated, could cause blindness.

The department is also leading corneal transplants in Israel and significantly shortening the waiting time for corneal transplant surgery. Medical professionals are placing special emphasis on the use of advanced technologies alongside a personal approach to each patient. They aim to ensure that quality of life is improved significantly for each patient.

Over the past three years, the average number of transplants per year was 30-40, but in the past year the numbers more than doubled to over 100. However, the waiting time for transplant surgery has been shortened from over twelve months to only a few weeks.

SCIENTIFIC RESEARCH

The Department is renowned for being an active and productive center of scientific innovation. It is ranked as one of the top ophthalmology departments in Israel and a leader in the field of medical research and publications.

Thanks to the generous support of the Matlow family, which previously funded an on-site research laboratory, the department continues to attract leading physicians and students from Tel Aviv University who are interested in participating in cutting-edge research projects.

The Department conducted important research throughout the pandemic and recently published a study about the relationship between COVID-19 vaccination and facial nerve palsy.

The team of researchers tested whether the Pfizer vaccine increases the risk of facial nerve palsy, publishing their results in The Journal of the American Medical Association (JAMA).



Click the icon to read more about this interesting study.

TRAINING THE NEXT GENERATION OF DOCTORS

The department values excellence and invests significant time and resources into training the next generation of physicians in both clinical and surgical fields. Dr. Idan Hecht is one of the outstanding residents who received a special Scholarship of Excellence Award from the Director General of Shamir Medical Center, Dr. Osnat Levtzion-Korach and the Director of the Ophthalmology Department, Dr. Eran Pras.

Dr. Hecht completed a demanding residency program, fulfilling all the clinical requirements. He also won the Dean's Award for the highest academic distinction for his MD degree at Tel Aviv University and published more than 55 articles in respected journals in the field of ophthalmology.

INAUGURATION CEREMONY

CHW was proud to inaugurate a new and advanced operating room. This is the third operating room to be established in the department and the first major expansion project in over 20 years. The new facility contains state-of-the-art equipment, including a new precision microscope and an operating bed that ensures patient are in the ideal position and do not move during surgery. The utilization of new virtual reality technology enhances the surgeons' visualization of the cornea with three-dimensional views that showcase the thickness of the cornea from multiple angles.

The Department is named after the late Esther Matlow^{z"l}, who served as CHW's National President from 1990-1993 and held dozens of leadership positions for decades. The Matlow family has made a significant contribution to the close relationship forged between the hospital and CHW, which has continued for decades. In attendance were Irving Matlow, Esther Matlow's husband, together with their daughter and son, Elaine Matlow Tal-El and David Matlow.

"My late wife and I have had the pleasure and privilege for many years to give light, together with you, to the patients at Shamir Medical Center. We feel part of the amazing team here that saves and corrects the sight of so many patients every day. This is a great and very exciting privilege for me and my family members."
- Irving Matlow



"The late Esther Matlow together with Irving Matlow are an integral part of our department. Their desire to assist and help patients improve and repair their eyesight is commendable."
- Dr. Eran Pras, Director of the Esther Matlow^{z"l} Ophthalmology Department



"The Matlow family has embraced our ophthalmology department for many years, and together with our excellent medical team we have revolutionized the ophthalmology department."
- Dr. Osnat Levtzion-Korach, Director General of Shamir Medical Center





SHAMIR MEDICAL CENTER (SMC)

The Institute of Pulmonary Functions and Diseases

The Institute of Pulmonary Functions and Diseases at Shamir Medical Center treats patients suffering from respiratory, lung, and lung functions diseases.

The Pulmonary Institute provides counselling for the inpatient and surgical wards and performs a variety of assessments of high-risk patients before surgery.

Annually, the department treats over 4,800 patients, and serviced over 13,000 patients in the first three quarters of the year, not including those seen at the sleep lab. These services include pulmonary function tests, physician visits, and diagnostic procedures.

4,800 PATIENTS TREATED ANNUALLY

13,000+ INDIVIDUAL SERVICES PROVIDED FOR PATIENTS BETWEEN JAN - OCT

The department continues to provide bi-weekly community-based support and specialized treatments at the Rehovot Tuberculosis Clinic. The department was recently celebrated for assistance in mitigating a local outbreak of tuberculosis, in a community of new Ethiopian immigrants.

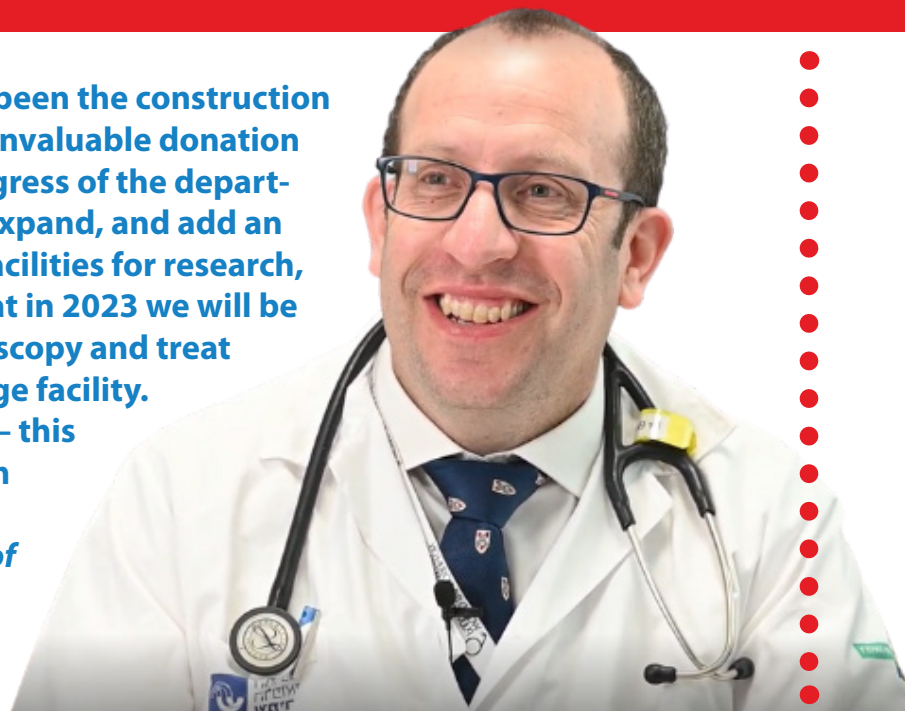
100+ DAYS OF COMMUNITY-BASED SUPPORT PROVIDED AT THE REHOVOT TB CLINIC

The most significant development has been the construction and expansion of the Pulmonary Institute, previously based in a small and outdated facility dating back to the mid-1900s. Despite repeated attempts to maintain the facility, the patchwork over the years has resulted in a sub-standard facility and a poor patient experience.

The old site will be made vacant in preparation for the new Emergency Medicine Department and Surgical Tower. Shamir Medical Center is gearing up to become among the largest hospitals in Israel.

50% EXPECTED INCREASE IN THE NUMBER OF PATIENTS TREATED IN THE COMING YEARS

“The main event for 2022, of course, has been the construction of the new Pulmonary Institute with the invaluable donation from CHW. This is a major step in the progress of the department. Thanks to CHW’s support, we can expand, and add an extra procedure room, mini-laboratory facilities for research, and extra rooms for doctors. We hope that in 2023 we will be able to perform more advanced bronchoscopy and treat more patients in our new and cutting-edge facility. Yet, one of our most important numbers – this year we received 23 thank you notes from patients and their families and zero complaints.” - Dr. Benjamin Fox, Director of the Pulmonary Institute



RESEARCH AND PUBLICATIONS

The Institute conducted advanced research in lung physiology, sleep medicine, and clinical studies of pharmaceutical companies and non-invasive respiratory best practices among hospitalized patients.

The department reinvigorated its clinical trials program after a break due to personnel issues. There are currently seven patients under clinical trials, and the numbers are expanding monthly.

Over the past year, the department has completed three academic research projects and published three papers.

The department is proud to collaborate with counterparts in Denmark through ‘Kineret,’ an innovative project spearheaded by the Ministry of Health.

Kineret is an innovative digital platform that provides technological and human infrastructure alongside assistive work processes to maximize the potential for the secondary use of information and data.

Over the past two decades, government hospitals in Israel have amassed a wealth of clinical, operational, and financial information.

Using information-based research and making use of data from medical centres will drive innovation, research entrepreneurs, and has the potential to advance the healthcare system, achieve scientific breakthroughs, promote quality of care, and improve service to patients.

PATIENT PROFILE

Dr. Fox shares just one example of how the department is providing holistic care to its patients:

“A recent dramatic case we treated was of a 32-year-old woman from the Philippines named Jasmine.*

We discovered that Jasmine had a pneumothorax on the right side of her chest, or more simply, she had air in the chest and was suffering a fever. Our team also discovered an infection and a cavity in her lungs.

We immediately put her into an isolation room and sent sputum samples to the labs where we diagnosed tuberculosis via a DNA test for the bacteria.

Jasmine’s case was very extreme. She repeatedly experienced high fevers, and the air was leaking from her lungs for a long time.

Thankfully, we could offer her one of the most advanced treatments in our department.

Over a short period, the air leak stopped, and Jasmine’s fever went down. She was able to regain her strength and even put on much-needed weight. In a few months, Jasmine will be able to return home to the Philippines.

What makes our department so unique is the commitment and cooperation of the staff with the rest of the hospital.”

**Name changed to protect the privacy of the patient.*



SHAMIR MEDICAL CENTER (SMC)

The Marla Dan Stroke and Invasive Neuroradiology Department

The Marla Dan Stroke and Invasive Neuroradiology Department treats a variety of patients from across the country, from all demographic backgrounds and varying age ranges. A stroke is a fatal disease and is the third most common cause of death in the Western world and the first most common cause of morbidity in Israel. Most of the stroke patients who need catheterization will die without immediate and successful treatment or will suffer from severe disability. About 25% of those suffering a stroke are under the age of 60 and 25% are under the age of 50. The youngest person hospitalized in the unit was 20 years old. The oldest was a 102-year-old Holocaust survivor with a blockage in the main artery of the brain stem.

The Department specializes in treating complex stroke patients with the most advanced medical technologies and equipment in the world. The Department provides solutions to all pathologies, such as stroke and aneurysms and offers a unique treatment for the detection and prevention of a stroke

by inserting stents into the carotid arteries in the neck that prevent the development of a significant stroke and the need for surgery.

The Institute was established in 2014 by Dr. Ronen Levite (pictured right) and currently employs two senior catheterization specialists, Dr. Levite himself and Dr. Shani Avneri-Kalmanovitz. They are among a handful of 16 specialists in Israel that cater to a population of over nine million. The department's outstanding performance is possible due to the dedicated nursing teams and radiologists who have undergone extensive training and are on call and available around the clock.



HIGHLIGHTS FROM 2022

Over the past year, The Marla Dan Stroke and Invasive Neuroradiology Institute continued to expand its services to the extent that they have gained recognition as Israel's leading Stroke Center.

Upgrades and improvements to the neurosurgical division ensured more catheterizations for aneurysms and vascular anomalies and expanding professional teams with specialists on call 24/7 has helped SMC meet the growing demands and emergency cases, particularly among stroke patients.

The upgraded facilities and latest equipment have given the Department the unique ability to perform interdisciplinary and multidisciplinary therapies that include treatment for stroke, aneurysms, cerebrovascular and cervical malformations, increased intracranial pressure and more.

The Ministry of Health commended the increase in catheterizations performed, which is now twice the national average.

LIFE-SAVING TREATMENTS

The Institute has performed more than 220 catheterizations, diagnostic interventions, and stenting in the first three quarters of 2022, an increase of over 30% from the previous year.

Dr. Levite is among the only four specialists in Israel who perform the most complex cerebral brain catheterization - IVM, a procedure performed entirely by a Biplane device.

Immediate intervention and treatment are the difference between life and death for patients suffering a stroke.

Immediate treatment can save lives and reduce long-term neurological disabilities. The Institute has also stepped up its outreach and regular training to identify stroke cases and enable emergency teams to quickly refer patients for catheterization.

The local ambulatory teams have a close connection to SMC doctors, and often directly contact them for advice while they are on route to the ER with patients.



20,000 PEOPLE IN ISRAEL EXPERIENCE A STROKE EACH YEAR. STROKE IS THE THIRD LEADING CAUSE OF DEATH IN ISRAEL.

50% ABOUT HALF OF STROKE VICTIMS ARE WOMEN AND THEIR NEUROLOGICAL DAMAGE IS MORE SEVERE THAN MEN.

30% THE NUMBER OF PATIENTS TREATED IN THE DEPARTMENT HAS GROWN BY 30% IN THE PAST YEAR AND MORE THAN DOUBLED OVER THE PAST 3 YEARS.

#1 THE MARLA DAN STROKE AND INVASIVE NEURORADIOLOGY INSTITUTE BECAME THE #1 LEADER IN ISRAEL FOR BRAIN CATHETERIZATIONS IN STROKE PATIENTS.

CASE STUDY: EVERY MINUTE COUNTS

Dr. Shani Avneri-Kalmanovitz (pictured left), a Senior Physician, reflects on the busy year and a special case:

"As published by the Ministry of Health, our unit is the leader in Israel. We receive patients from across the country.

The brain neither forgets nor forgives. The window of opportunity for treating blocks in stroke patients is narrow, and the response must be immediate.

Just this week, a 39-year-old woman and mother of four young children, came to us with a stroke caused by a blockage of the central artery in the brain.

Those who suffer a stroke do not forget. Patients are deprived of the ability to speak and recognize things dear to them (including her children). This patient's face was completely distorted, and she couldn't move her right arm and a leg even a little.

Less than an hour after she entered the emergency room, she was already in the catheterization room, and half an hour after the catheterization she was awake. A few days later she was released from the hospital fully functioning: Back to her husband, back to her children, back to life."



SHAMIR MEDICAL CENTER (SMC)

The Marla Dan Interventional Radiology Institute

The Marla Dan Interventional Radiology Institute provides cutting-edge and advanced treatments at the highest international standards to access critical diagnostic data providing world-class patient care. The Institute is run by Dr. Alexei Cherniavsky.

"The Marla Dan Interventional Radiology Institute places patients at the centre and aligns with the global trend to advance minimally invasive medicine." - Dr. Cherniavsky

The Institute conducts a variety of treatments and operates two catheterization rooms that include advanced systems and recovery areas for patients. The Institute has become a centre of excellence thanks to the advanced technology, professional team and general support it has received from the Dan Family.

The Marla Dan Interventional Radiology Institute is a national leader, being the first to use advanced 3D and CBCT medical imaging techniques, ensuring patient diagnosis and treatment are safe and efficient.

The professional team is skilled at performing complex operations, such as stent grafting, and angiography, abdominal, pelvic, leg, and peripheral catheterization, decreasing the need for operations.

With medical staff on call 24/7, The Marla Dan Interventional Radiology Institute is well-equipped to handle all types of emergencies, including rare cases involving children.

The Institute gives new hope to patients who previously had little or no access to such quality treatment, particularly those from lower socio-economic backgrounds due to being based near Tel Aviv.

Rare and complex cases are now treatable in-house, and referrals to external hospitals are no longer necessary.

"We now have the best facilities and standards of care in Israel. Our department has grown exponentially in 2022, and our dedicated team is working around the clock to save lives.

It's not uncommon that during one shift, we will need to juggle emergency cases and perform life-saving procedures.

The department has developed a strong reputation for excellence and is getting more referrals for complex cases."

- Dr. Alexei Cherniavsky, Director of The Marla Dan Interventional Radiology Institute



INNOVATIVE CARE

What sets The Marla Dan Radiology Institute apart is the winning combination of cutting-edge equipment and the integration of technological applications with a team dedicated to providing innovative care.

The Institute is continually expanding under the management of Dr. Cherniavski. Complex procedures are being performed for the first time at the hospital and pioneering technologies are being used.

All scheduled IR procedures are carefully planned so that the two catheterization labs can operate at full capacity. The Institute has also trained additional medical staff to improve overall efficiencies. Since embarking on these changes, the Institute has doubled its life-saving activities over the last three years.

PATIENT CARE

Professor Sigal Tal, Director of the Imaging Institute at Shamir Medical Center, shared:

"We are always trying to maximize our impact and push ourselves to offer the best care for our patients.

A concerned husband recently consulted with me about his very sick wife, as he wanted to understand why she couldn't undergo a particular specialized examination of a peripheral nerve. His conclusion was to fly his wife abroad to access this test.

I immediately began to investigate the matter. I studied the literature and attended training and conferences that helped prepare me to perform the same test myself.

To this day, I am one of the only radiologists who can do this in Israel. It is highly complex, but it spares patients the trip abroad. The desire to constantly initiate, develop and research what else can be done, is embedded deep within me, and our departments. We feel a great sense of satisfaction knowing that we've helped a patient. It's ultimately the most important thing."

PATIENTS TREATED INCREASED BY OVER

150%
SINCE 2020

1500+
LONG PROCEDURES PERFORMED

375+
SHORT PROCEDURES PERFORMED

2796
ANGIOGRAPHIES PERFORMED
(UP FROM 1,493 IN 2019)



SHAMIR MEDICAL CENTER (SMC)

CHW Debbie Eisenberg and Gary Levene Pediatric Intensive Care Unit (PICU)

The CHW Debbie Eisenberg and Gary Levene Pediatric Intensive Care Unit (PICU) annually treats over 300 patients ranging from infants as young as two days old to children and adolescents up to 18. The PICU has continued to make a massive impact with its advanced features, cutting-edge facilities and state-of-the-art equipment.

Thanks to the generous support of CHW, the entire PICU area was expanded and redesigned to meet the highest international standards. With six fully self-contained private rooms, including a negative pressure isolation room, every patient has the privacy and space to receive treatment with dignity. Each room can now comfortably accommodate family members during such challenging times when young children need the most support. In addition, each room is equipped with state-of-the-art medical and diagnostic equipment as well as its treatment cart so staff can effectively tend to each patient while preventing avoidable cross infections. All the updates

have impacted SMC, ensuring that critically ill children receive the most advanced patient care and life-saving treatment.

THE PROFESSIONAL TEAM

Professor Ibrahim Abu Kishk directs the PICU and has taken a family-centred approach to care for patients. This includes the recognition of parents as essential partners throughout all stages of their child's medical-care process.

Parents are welcome to stay by their child's side and assist with hospital routines such as bathing, feeding, weighing, and more. Parents remain constantly updated about their child's condition and test results and are included in all stages of planning for future treatments. Parents receive both practical and emotional support throughout their child's treatment and recovery period.

The PICU's multidisciplinary medical team consists of pediatric intensive care specialists, as well as experts from other medical disciplines, such as surgery, infections, neurology, cardiology, pulmonary, etc. The PICU staff also includes dietitians, a specialized social worker, physiotherapists, respiration experts, and medical equipment technicians.

RESEARCH AND PUBLICATIONS

Over the past year, the PICU team's research activities included a study on the significant increase in the number of children with diabetes who needed critical care during the lockdown.

Additional research projects have included continued analysis of data to find a connection between increased cases of diabetes and COVID-19. Another area of research focuses on the willingness of parents to vaccinate children in the context of the pandemic.

PURIM FESTIVITIES AT SHAMIR HOSPITAL

During Purim, doctors' gowns were down, and fun and games soothed the atmosphere of a typical day at the hospital.

The CHW Debbie Eisenberg and Gary Levene Pediatric Intensive Care Unit (PICU) ensured a safe environment for all patients to enjoy the fun and games of Purim in a uniquely designed space.

The upgraded facilities have helped to ensure the fun of Purim was possible with the use of specially designed protective windows. These unique PICU windows (see photo to the left) enable relationships with the wider world to continue and proved vital even during Purim.

Breakdown of Admissions:

Respiratory 25%

Post-Operative 25%

Sepsis Conditions 13%

Neurosurgical Conditions 7%

Cardiovascular Conditions 7%

Endocrine Conditions 7%

Other 7%



IMPACT NUMBERS

24/7 availability to provide emergency medicine and critical care treatments

300 critically ill infants and children received life-saving treatments in the PICU last year

FOUR DAYS TO FOUR MONTHS is the range of time patients are treated in the PICU focusing on the impact of COVID-19 on children

ZERO cross infections among patients since relocating into new facilities



SHAMIR MEDICAL CENTER

The M. Fanny Comprehensive Breast Institute

The M. Fanny Comprehensive Breast Institute at Shamir Medical Centre (SMC) is a uniquely placed service in Israel as it provides comprehensive and compassionate medical services for women in one location.

From day one, women are examined by a surgeon and undergo mammography – and ultrasound, if necessary – receiving immediate results.

Speed is key, so at the M. Fanny Comprehensive Breast Care Institute a breast biopsy can be performed, and pathology results received, within 48 hours. Women, who usually spend agonizing days worrying over possible results, recognize the importance of this comprehensive care and the demand for this service is high.

The experienced multidisciplinary team conducts a full range of diagnostics and therapies, including breast examinations, mammograms, and ultrasounds conducted by top surgeons,

radiologists, oncologists, reconstructive surgeons, nurses, X-ray technicians, and social workers.

Individualized treatment programs are tailored to meet the needs of every patient, particularly women with a high risk for developing cancer, in a warm and supportive environment. The Institute conducts year-round public health campaigns highlighting the importance of early detection.

12,000+ WOMEN SCREENED, TREATED AND CARED FOR ANNUALLY

4,000+ WOMEN ARE DIAGNOSED WITH BREAST CANCER IN ISRAEL EACH YEAR

10% OF ALL NEW BREAST CANCER CASES IN ISRAEL ARE TREATED AT THE INSTITUTE

6+ SURGERIES ARE PERFORMED DAILY, IN FULL COORDINATION WITH PROFESSIONAL TEAM

HIGHLIGHTS

The M. Fanny Comprehensive Breast Institutes is among the few specialized facilities for women that remained fully operational, and even extended its services, throughout the pandemic. The Institute extended its operating hours, in order to continue screening and treating women, without compromising the health and safety of patients or staff. It quickly became inundated with new patients from across the country who were seeking immediate and urgent medical attention. Medical staff are still working around the clock, with morning hours reserved for screenings and afternoons for biopsies. The Institute's top priority is to increase capacity to treat as many women as possible, and not turn anyone away.



THE ISAAC SINCLAIR BREAST BIOPSY UNIT

Thanks to the generous donation of The Isaac Sinclair Breast Biopsy Unit (pictured left), The M. Fanny Comprehensive Breast Institute at Shamir Medical Centre has significantly improved its capacity to provide cutting-edge and compassionate medical care to thousands of patients.

Over 12,000 women are treated and serviced at the Institute annually. In the past year, 350-400 new breast cancer patients received diagnosis, treatment, and follow-up care at the Institute.

Precision in screenings and biopsies has dramatically improved since the installation of the new Tomosynthesis Unit, an advanced mammography that provides multiple images of the breast. These 3D images are critical in the screening and diagnosis of early signs of breast cancer in women with or without clear symptoms. The unit is a game changer for the Institute, advancing pre-biopsy screenings and complex biopsy procedures, including on-the-spot testing of specimens.

Having the most updated and accurate diagnosis has meant that staff are able to better prepare for the surgery and remove all signs of cancer, helping to reduce the risk of recurrence and ultimately save more lives.





CHW NERI BLOOMFIELD ACADEMY OF DESIGN

CHW Neri Bloomfield Academy of Design (NBA) plays a crucial role in expanding access to higher education in Israel's northern periphery. Many of the students are from Jewish and Arab under-served communities who want to rise above their current socio-economic status. CHW's ongoing support and scholarship funds help ensure that talented students with financial difficulty can pursue a degree that can help generate social mobility.

As the school moves towards a new era of education and innovation, CHW's support has transformed the campus through major upgrades and expansion projects.

The CHW Roslyn Joseph Auditorium provides a much-needed gathering space for large lectures, assemblies and conferences, and seats up to 150 people.

The Marilyn Libin and Jed Gaines Fab Lab has been a game-changer for students pursuing all design fields, including Fashion. The Fab Lab offers a cutting-edge and innovative learning environment and specialized equipment, such as laser cutters and 3D printers. NBA's team of dedicated instructors and industry leaders provides the theoretical and practical skills students need to become leaders in their chosen career paths.

STAND OUT DESIGN STUDENT

CHW scholarship recipient, Shirel Abergel, won first place in the 'Genderless' category with her graduating collection (shown above) at the prestigious 2022 Global Design Graduate Exhibition in partnership with Gucci. Her collection, titled 'I Used to Be You' showcased the stages of transition that people on the streets go through.

The collection presents different stages of transition from a normal life of stability to physical loss of shelter, mental health decline and more. Street dwellers say that with all the difficulty they go through, there are also points of light. A simple smile can help lift their spirit and give them hope.

-Shirel Abergel



FASHION BLOOMS WITH NEW TECHNOLOGIES

Proceeds from CHW FASHION BLOOMS provide the cutting-edge equipment and new technologies that will help reposition NBA as a leader in the field of fashion innovation.

The Fashion Department continues to transform following the appointment of Rachel Getz Salomon as the new Department Head.

Ms. Getz Salomon has a rich academic background in cultural studies and a keen interest in the cross-section of fashion and innovation. She has helped to revamp the curriculum and carry out a complete digital transformation across the department.

Due to the latest design software and new technologies, students in the department are learning critical skills to thrive in a rapidly changing industry and one that is prioritizing the environment and sustainability.

Their studies spread to site visits with Israel's industry leaders including, Koranit, a company that specializes in garment digital printing and has become a global leader in on-demand sustainable fashion production through its use of technology.

700+ students from diverse backgrounds studying in the heart of Haifa

80%+ students are women and first in their family to pursue higher education

60+ new and cutting-edge technologies accessible to students from all departments



SPECIAL VISITS

CHW was delighted to host Harry and Nancy Bloomfield at NBA, as well as a visit with Evelyn Bloomfield Schachter and Raphael Schachter for a special plaque unveiling.

The new plaque at the entrance to the college honours Neri Bloomfield^{z"l}, the youngest CHW National President (1972-1976) for her lifelong dedication and service to the people of Israel.



**RACHEL GETZ
SALOMON**



GRADUATING FASHION SHOW AND DESIGN EXHIBITION

The 2022 graduating class was thrilled to showcase their designs at the Graduate Fashion Show held at Haifa's landmark Teddy Stadium.

The show was a smashing success, attended by fashion influencers, media personnel, and the Mayor of Haifa, Einat Kalisch-Rotem. The show was a celebration of the creativity and the tenacity of students who completed more than half of their degrees during the global pandemic. The unprecedented circumstances resulted in a student collection that reflects the fashion industry's move towards sustainability, equity, and inclusion.





CHW NETANYA TECHNOLOGICAL HIGH SCHOOL

CHW Netanya Technological High School is a leader in providing practical skills to at-risk and disadvantaged youth who have fallen through the cracks of traditional educational frameworks.

CHW Netanya continues to gain prestigious awards from the Ministry of Education for outstanding performance.

The school succeeds at decreasing the drop-out rate, increasing opportunities for students with special needs, and increasing the number of students graduating. These successes and the school's ethos have led to a high rate of students pursuing national and military services upon graduation.

One of CHW's focuses is on mental health and empowering students to cope and deal with their challenges, so in order to increase support for youth mental health at CHW Netanya, they extended their hours of therapeutic support and individual counselling services.

The school has also introduced new individualized learning plans and more interactive programming to enhance relationships between students and their families.

70

70 students are given a second chance and practical skills after falling through the cracks of traditional educational frameworks.

50

50 students a year receive entrepreneurial and business development training alongside vocational training.

THE PATISSERIE PROGRAM

The Culinary Arts Program now includes the Patisserie Program, Cooking, and the new specialty Ice Cream Track.

CHW is working with Israeli pastry chef, Eyal Levy, who heads the flagship Patisserie Program. Students are given the emotional support, professional skills, and practical tools needed to succeed in Israel's exciting culinary industry.

Students benefit from the professional patisserie kits provided in their final year. The kits, containing a personalized chef uniform and baking accessories, equip students with everything they need to enter the industry.

To enhance the overall learning experience, several specialty workshops with leading pastry chefs and entrepreneurs took place throughout the year, including Adi Avital, a graduate of the school and renowned entrepreneur and co-founder of Anita Group and the Golda Ice Cream chain. With his guidance and support, plans are well underway to expand the culinary opportunities through a specialty ice cream training program in partnership with Anita Group.



"I feel happy and privileged to be in the position where I can pass on to the future generation the professional knowledge developed and accumulated over the years at Golda Ice Cream chain. The connection that my brother Nir and I have with this school is an integral part of the chain's success today. We believe that every child needs someone who believes in them and gives them the tools for success. This made all the difference for Nir and me. The opening of the ice cream training program completes a circle that will give students professional skills and an opportunity to be a part of the ice cream industry in Israel." - Adi Avital, Co-Founder of ANITA Group and Golda Ice Cream Chain & Graduate of CHW Netanya

100%

100% of graduating students in the Patisserie Program completed their matriculation exams, equipped with skills and professional networks to launch an exciting career in Israel's vibrant culinary industry.



HAIR AND BEAUTY TRACK

The Hair and Beauty Track prepares students for a rewarding career in Israel's vibrant beauty industries. Students learn practical skills at a salon established with the generous support of CHW.

This includes exposure to the latest equipment and beauty products that meet industry standards. Alongside this, a new workshop series allows students to learn from and network with top industry professionals.

20

20 students successfully complete the Hair and Beauty Program with skills to launch their own business.

COMMUNITY EVENTS

As part of the Hair and Beauty Track, students play a role in the wider community. Special events, like International Women's Day, are celebrated at the school and give students the chance to showcase their skills and offer their hair styling services to women!

This past year, the Mayor of Netanya, Miriam Feinberg personally joined the festivities!





WIZO SERVICES FOR VICTIMS OF DOMESTIC VIOLENCE

S.O.S Starting Over Safely Summer Campaign

On August 23, 2022, CHW launched its second annual online crowdfunding campaign to empower victims of domestic violence. In just 27 hours, thanks to the generosity of our supporters and Matching Heroes, we exceeded our goal and raised over 451,000.

Globally 81,000 women and girls were killed in 2020, and 58% of them died at the hands of an intimate partner or a family member. This is equal to a woman or girl being killed every 11 minutes. In Canada, one woman is killed in a violent act every three days. In Israel, the situation is just as critical: in the first year of the COVID-19 pandemic, 20,140 domestic violence complaints were lodged with police, an increase of 12% from the previous year, and according to the Women's International Zionist Organization (WIZO) over 60 women were murdered since 2020. In fact, 12 women have been murdered in the first six months of this year. True to its mission, CHW is leading the way to empower women by stepping up emergency support and services at this critical time.

WIZO REPORT

In the tenth WIZO Annual Domestic Violence Report, the focus was on children who are exposed to domestic violence, based on the belief that violence is not predestined, and that there are ways to reduce harm and prevent intergenerational transmission among children exposed to violence. These actions will drive recovery and rehabilitation and ultimately foster a healthier and more prosperous society in Israel. The report highlighted the scale of domestic violence in 2021:

- 3,538 investigations were opened for violent crimes against minors – a 3.1% increase compared to the previous year, which saw an increase in cases of domestic violence, attributed in part to COVID-19
- An increase of 24% in the number of minors identified as victims of domestic violence in emergency rooms
- A 76% increase in the number of cases which resulted in charges being brought

The report calls on the Israeli government to be proactive in collecting data regarding the characteristics and extent of the phenomenon to reduce the scope of domestic violence and to produce a working plan to end the cycle of violence.

THE CHW AND WIZO PARTNERSHIP

Due to the increase in domestic violence in Israel, CHW's partnership with, and support of, WIZO is more critical than ever. CHW supports WIZO services for domestic abuse survivors through Essentials Kits and the Safety Net Program – ensuring that women, and their children, have a safe place to turn.

SAFETY NET

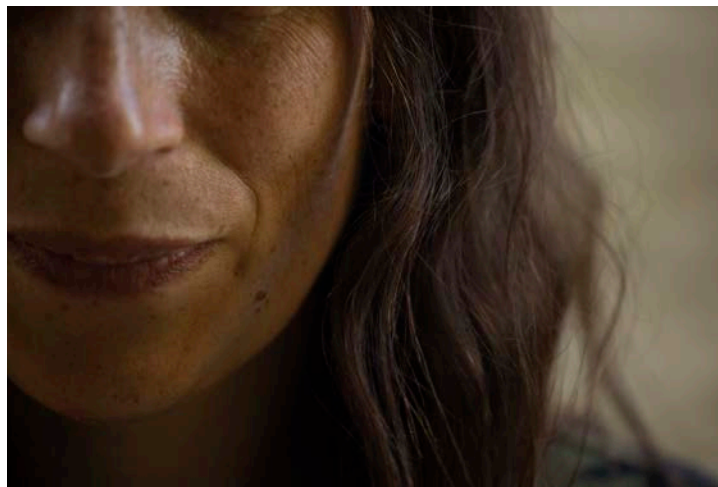
The Safety Net Program has nearly 100% success rate to break the cycle of violence and prevent victims from re-entering a domestic abusive relationship. The Safety Net Program assists with financial, social and personal support, helping to provide and care for the victims' greatest needs.

ESSENTIALS KITS

Essentials Kits are provided to women leaving a WIZO emergency shelter. The kit provides basic necessities like small electric appliances, clothing, school supplies, linens, kitchen utensils and other household items. The Kits are tailored to the specific needs of each family, to help families launch a fresh start in a new home environment.

IMPACT OF S.O.S CAMPAIGN

- Provided help for parents and families in need or an urgent response.
- Provided access to critical resources such as legal counsel and counselling services.
- Provided women and their children with the basic essentials to start over safely.
- Empowered women and their children by providing social and personal support, employment support, and a network of other women in similar circumstances.
- Provided women and their children with specially trained canine protection.
- Funded respite summer camp experiences for at-risk youth.



CLICK HERE TO READ AN IMPACTFUL STORY ABOUT A WOMAN WHO WAS ABLE TO REMOVE HERSELF AND HER CHILDREN FROM THE CYCLE OF VIOLENCE



NEW PARTNERSHIPS IN 2022

FRANNY'S FUND, CANADA

In January 2021, Rebecca Snukal (B.A., LL.B. KC.) founded Franny's Fund to provide help for parents and families in need of an urgent response, who are unable to access critical services.

In partnership with Franny's Fund, administered through the Canadian justice system, at-risk women and children across the country have access to the necessary support for legal counsel or therapeutic counselling services. With CHW's support going forward, we anticipate being able to help hundreds of families across the country.

MICHAL SELA FORUM (MSF), ISRAEL

Michal Sela Forum offers an innovative program, which matches protection dogs with survivors to provide security for women and children impacted by domestic violence. It's the first program of its kind in Israel. It has proven effective, empowers and supports survivors to aid them when leaving home by providing them with a specially trained protection

dog that can give them guidance, confidence assessing public spaces, leading their owner, and offering protection.

Victims can get their life back on track with a new sense of security. This is a highly impactful program that saves lives and costs a fraction of what it would cost to keep a woman at a domestic abuse shelter for several months.

The fund will provide all specialized security training and tailored programs for each survivor. It also includes an individualized guidance protection dog for each survivor or family, as well as ongoing follow-up, veterinary service, and care for the dog.

46 THERAPY SESSIONS AND ONE FAMILY RECEIVED LIFE-CHANGING RESPITE SUPPORT FROM FRANNY'S FUND

82 WOMEN UNDER CONTINUOUS THREAT FROM THEIR EX-PARTNER WILL BE PAIRED WITH MSF PROTECTION DOGS IN THE COMING 24 MONTHS

245 CHILDREN AFFECTED BY DOMESTIC VIOLENCE WILL BENEFIT FROM THE SPECIALLY TRAINED MSF CANINES

CHW IN CANADA



CHW is making a difference in the lives of children and families from coast to coast.

By supporting CHW, you are ensuring local programs can thrive. With centres across Canada, there are many ways for you to support those in need right here at home:

- CHW Calgary holds an annual Chanukah Toy Drive for families who cannot afford any extras
- CHW Montreal's Pro-Am Golf Tournament provides funding for the Myra's Kids Foundation Summer Camp, a free non-denominational bereavement camp
- CHW Toronto supports mental health for at-risk youth through the Jerome D. Diamond Adolescent Centre
- There are many scholarships, bursaries, and academic awards supported at several educational institutions
- CHW Toronto and CHW Vancouver support the next generation through CYJ camps, community outreach programs, and specialized LGBTQ+ and leadership training that enhances Jewish and personal identity.

Our vision is to be the best Canadian philanthropic organization supporting social services, programs and projects in Israel and Canada. We strive to be recognized as the leaders by our members and friends, donors, partners and our beneficiaries in Israel and Canada.

In 2022, CHW hosted **50+** fundraising events in support of at-risk women and children. Centres across Canada sold **1,537** boxes of Rosh Hashanah Chocolates, **1,291** flowers, and **2,000+** cards. Over **1,525** people registered for online or in-person events, over **21,300** people viewed CHW video content, and we supported **220+** local youth.

In partnership with Franny's Fund, CHW is helping provide financial support for legal counsel and therapeutic counselling services to families in Canada in need of urgent care.

WHAT ELSE IS NEW AT CHW

CHW launched our first round of Social Impact Investing in Israel on October 27, 2022, as part of the *Journey 4 Impact* trip of a lifetime. This is the start of an innovative and sustainable impact initiative geared at empowering women.

CHW is the first philanthropic foundation to launch a gender-lens impact investment fund in Israel. We will help ensure better outcomes in areas such as gender disparities, social mobility, and economic opportunities for women and girls; all closely aligned with UN Sustainable Development Goals (SDGs).

Every CHW investment will enable women entrepreneurs to advance socially conscious businesses that create impact in Israel and change lives. This investment not only empowers the start-up community, but it also creates a sustainable future for the next generation of small businesses in Israel.

Every dollar invested by CHW will generate a clear and measurable social and financial return on investment. All funds

will be invested into ventures led by and benefiting women. At the end of the term of investment, CHW will reinvest the funds through an innovative funding model that amplifies impact. CHW will grow its impact investment portfolio on an annual basis as part of *Journey 4 Impact*.



THANK YOU



CONTACT US:

CHW National Office:

1-855-477-5964

info@chw.ca

www.chw.ca

209-638A Sheppard Ave West

Toronto, ON M3H 2S1



@CANADIANHADASSAHWIZO



@CANADIANHADASSAHWIZO



@CANADIANHADASSAHWIZO



@CANADIANHADASSAHWIZO



@CHW_NATIONAL

THANK YOU